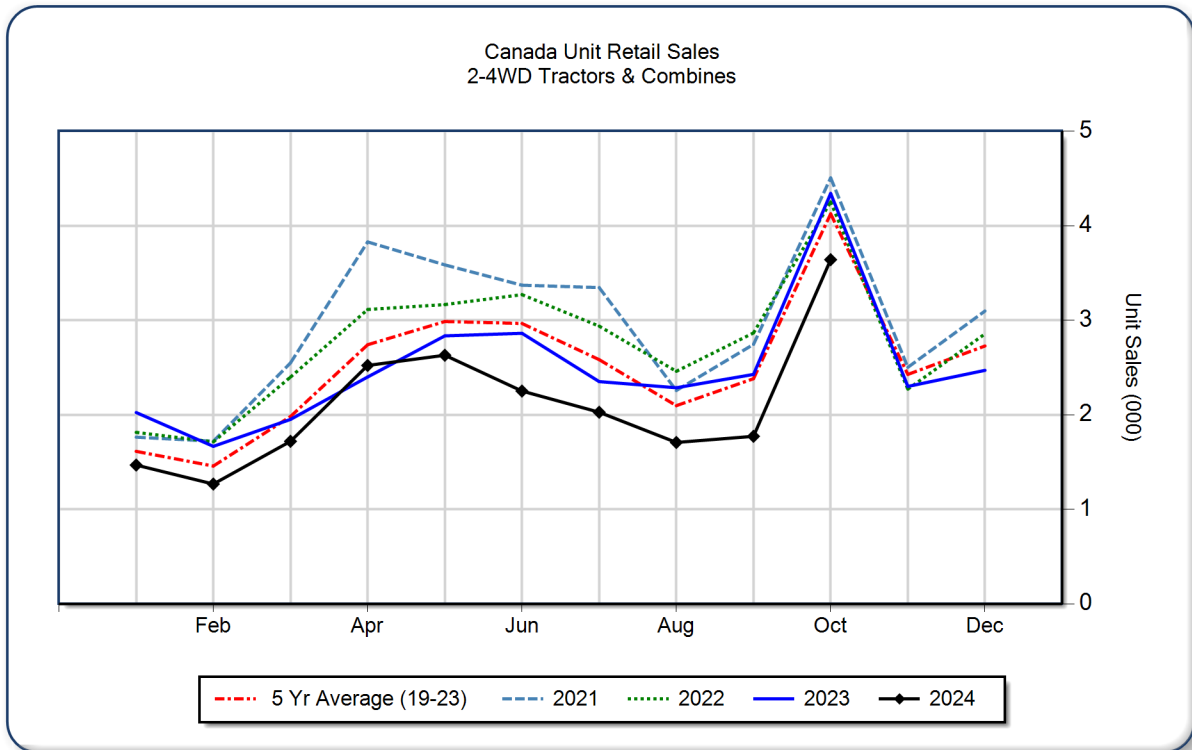


## AEM Canada Ag Tractor and Combine Report October 2024

Copyright, AEM. All rights reserved. If data is referenced, please acknowledge AEM as the source.

	October			YTD - October			Beginning Inventory Oct 2024
	2024	2023	%Chg	2024	2023	%Chg	
<b>2WD Farm Tractors</b>							
< 40 HP	1,562	1,859	-16.0	11,417	13,931	-18.0	10,343
40 < 100 HP	1,068	1,210	-11.7	4,043	5,201	-22.3	5,048
100+ HP	501	674	-25.7	2,954	3,323	-11.1	2,626
<b>Total 2WD Farm Tractors</b>	<b>3,131</b>	<b>3,743</b>	<b>-16.4</b>	<b>18,414</b>	<b>22,455</b>	<b>-18.0</b>	<b>18,017</b>
<b>4WD Farm Tractors</b>	<b>216</b>	<b>197</b>	<b>9.6</b>	<b>957</b>	<b>848</b>	<b>12.9</b>	<b>252</b>
<b>Total Farm Tractors</b>	<b>3,347</b>	<b>3,940</b>	<b>-15.1</b>	<b>19,371</b>	<b>23,303</b>	<b>-16.9</b>	<b>18,269</b>
<b>Self-Prop Combines</b>	<b>294</b>	<b>402</b>	<b>-26.9</b>	<b>1,633</b>	<b>1,841</b>	<b>-11.3</b>	<b>413</b>



The AEM Ag Tractor and Combine Report is provided monthly and is derived from AEM member companies through proprietary statistical reporting programs. The data is provided by AEM members and represents preliminary monthly retail sales of Ag equipment. Separate reports are available for the U.S., Canada and Russia. For more information, please visit: <https://www.aem.org/market-share-statistics/us-ag-tractor-and-combine-reports>. **Attention Media:** To speak with an AEM spokesperson about the data, please contact Sandra Mason at [smason@aem.org](mailto:smason@aem.org).